

# Mounted Disc Plough



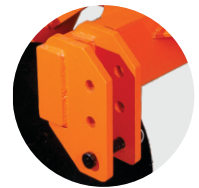
Heavy Duty Scrapper



Coulters + Shocker Disc Assembly



Stand For Easy Storage



Heavy Duty Drawbar

## Features & Benefits

- ◆ Universal Disc Ploughs are designed to work in all types of soils and can be used easily in hard soils & in rocky and rooted areas.
- ◆ Universal Disc Ploughs can handle the toughest ploughing jobs with ease.
- ◆ Available with the option of high quality Universal Boron steel discs that last much longer than regular steel discs.
- ◆ Heavy duty pipe frame with high ground clearance makes it easy for the plough to work in fields with a lot of crop residue.
- ◆ Especially useful in hard and dry trashy land, stony soil conditions and in soils where scouring is a major problem.
- ◆ Available in 2, 3, 4 and 5 bottom configurations.
- ◆ Coulters disc + shocker assembly keeps the plough perfectly aligned.

DESCRIPTION	BEMDP-2	BEMDP-3	BEMDP-4	BEMDP-5
FRAME (mm)	Seamless tubular frame (OD-168, ID-146)			
AXLE TYPE	Forged spindle			
NO. OF DISC	2	3	4	5
TYPE OF DISC / BLADE	Boron steel & High carbon steel			
DISC DIAMETER (mm)	610, 660, 710mm & thickness 4~8mm			
DISC SPACING (mm)	570mm (23" Approx)			
BEARING HUBS	2	3	4	5
MOUNTED CATEGORY	Cat-II			
WIDTH OF CUT (mm - Approx)	500~550	875~925	1150~1200	1575~1625
WEIGHT (Kg. Approx)	310	415	510	620
TRACTOR POWER (HP)	50~60	65~80	85~100	105~125

\*The weight and working data contained here are supplied for information only and are not binding. Specification and size can be altered as part of ongoing product modification / improvement.